

PART 1 - PUBLIC

Decision Maker: **Adult and Community PDS Committee**

Date: **22nd June 2010**

Decision Type: Non-Urgent Non-Executive Non-Key

Title: **UPDATE FROM CO-OPTED MEMBERS**

Contact Officer: Philippa Stone, Democratic Services and Scrutiny Officer
Tel: 020 8313 4871 E-mail: philippa.stone@bromley.gov.uk

Chief Officer: Mark Bowen, Director of Legal, Democratic and Customer Services

Ward: N/A

1. Reason for report

1.1 At its meeting on 22nd June 2010, the Adult and Community PDS Committee asked its Co-opted Members to provide a brief outline of the organisations that they represent and the ways in which the work of the PDS Committee is reported back to the Local Authority's partners.

2. **RECOMMENDATION(S)**

2.1 The Committee is asked to note the update provided by the Co-opted Members.

Corporate Policy

1. Policy Status: Existing policy. "Building a Better Bromley"
 2. BBB Priority: Excellent Council.
-

Financial

1. Cost of proposal: No cost
 2. Ongoing costs: N/A.
 3. Budget head/performance centre: Democratic Services
 4. Total current budget for this head: £476,706
 5. Source of funding: Existing Budget
-

Staff

1. Number of staff (current and additional): There are 14 posts in the Democratic Services team (11.89 fte, of which 10 fte are dedicated to committee support).
 2. If from existing staff resources, number of staff hours: N/A
-

Legal

1. Legal Requirement: No statutory requirement or Government guidance.
 2. Call-in: Call-in is not applicable.
-

Customer Impact

1. Estimated number of users/beneficiaries (current and projected): Current Membership of the A&C PDS Committee (16 Members including Co-opted Members)
-

Ward Councillor Views

1. Have Ward Councillors been asked for comments? N/A.
2. Summary of Ward Councillors comments: N/A

3. COMMENTARY

- 3.1 Following the meeting of the Adult and Community PDS Committee on 22nd June, all Co-opted Members were asked to provide a brief outline of their individual areas of expertise and the organisations that they represent on the Committee.
- 3.2 Co-opted Members were asked to provide a brief overview of the organisation that they represent and how information about the work of the Committee is fed back to its Members and how the decisions taken by the council affect the residents and organisations that they represent.
- 3.3 The information received from the Co-opted Members is attached at Appendix A of this report.



NHS BROMLEY

Bromley PCT
Bassetts House
Broadwater Gardens
Orpington
Kent,
BR6 7UA

Tel: 01689 853339
Fax: 01689 855662
www.bromley.nhs.uk

Bromley Primary Care Trust (PCT), now known as NHS Bromley, was established on 1 April 2001. It took over the roles of the three former Primary Care Groups in Bromley, the Ravensbourne Community Services NHS Trust, and some of the functions of the former Bromley Health Authority.

What we do

NHS Bromley leads the NHS in a large borough geographically, with both urban and rural areas. The Borough's population of around 300,000 is generally affluent, although there are wide geographical variations in health and well-being, with pockets of low income populations and high levels of unemployment. Inequalities across these wards are revealed by key deprivation indicators such as lower life expectancy and self-reported levels of poor health. The population, which is already relatively elderly, is projected to rise, especially those who are newly retired, and those younger than 16 years.

From its total annual budget of £471m, NHS Bromley commissions services for its population from a wide range of acute, specialist, community, primary care, voluntary sector and independent sector providers. The main acute provider is South London Healthcare NHS Trust. The main mental health provider is Oxleas Foundation Trust, and NHS Bromley's own Community Provider Unit is the main provider of community based services. Historically, Learning Disabilities services have been provided by the PCT's Community Provider Unit. However, over the past two years NHS Bromley has been working with the London Borough of Bromley to re-engineer the commissioning and provision arrangements for Learning Disabilities clients, and this transition is now nearing completion. This is a model of innovation and partnership which we wish to build on for the future.

NHS Bromley's vision of creating a community in which 'the people of Bromley will live longer, healthier lives supported by a world class health system' represents a significant challenge. Significant progress has already been made: residents in Bromley now have an increased life expectancy of 80.2 years, whilst health inequalities have also reduced from a life expectancy gap of 10.6 to 8.4 years. However, we recognise that we will be supported by strong working relationships with clinicians and our local partners through the Local Strategic Partnership, and through our joint working with the London Borough of Bromley.

Partnership Working with the London Borough of Bromley

The PCT Board endorsed a refreshed version of the Local Area Agreement document "Building a Better Bromley - 2008 to 2011" in November 2009. The Agreement with the London Borough of Bromley is a key achievement of the Local Strategic Partnership. It establishes 30 indicators linked to targets for improvement which will be set once the baselines have been established. These indicators address some challenging and emerging issues such as reducing waste to landfill and increasing the percentage of waste recycled or composted, improving energy efficiency, reducing CO2 emissions, reducing obesity and increasing the amount of exercise amongst adults.

Learning Disability Services

The London Borough of Bromley is the lead agency in Bromley for commissioning and managing all Learning Disability services including the PCT's residential service which is managed under a Section 75 agreement. Key priorities for Learning Disability services include the provision of high quality services for all clients and the transfer of the PCT's residential services to new community-based providers to ensure that services meet the requirements of "Valuing People" (Department of Health, 2001).

During 2009/10 good progress was made on the programme to reprovide the PCT's Learning Disability residential service in new and improved accommodation within the community and with the transfer of current services and staff to new community-based providers. A successful bid secured £4.9 million from the central NHS capital fund to support PCT and other local capital resources to enable this significant change to take place. The first phase of this programme, which started in 2009, is due for completion in 2010. However, the economic downturn has impacted on some of the plans for Registered Social Landlords to provide capital funding for developments. The PCT has been working with the London Borough of Bromley to explore the options to resolve this and avoid any further delay to the programme.

Pending the transfer of these services, a Performance Improvement Plan has been developed to ensure that current services are provided at an appropriate level of quality. Reports on performance against this plan,

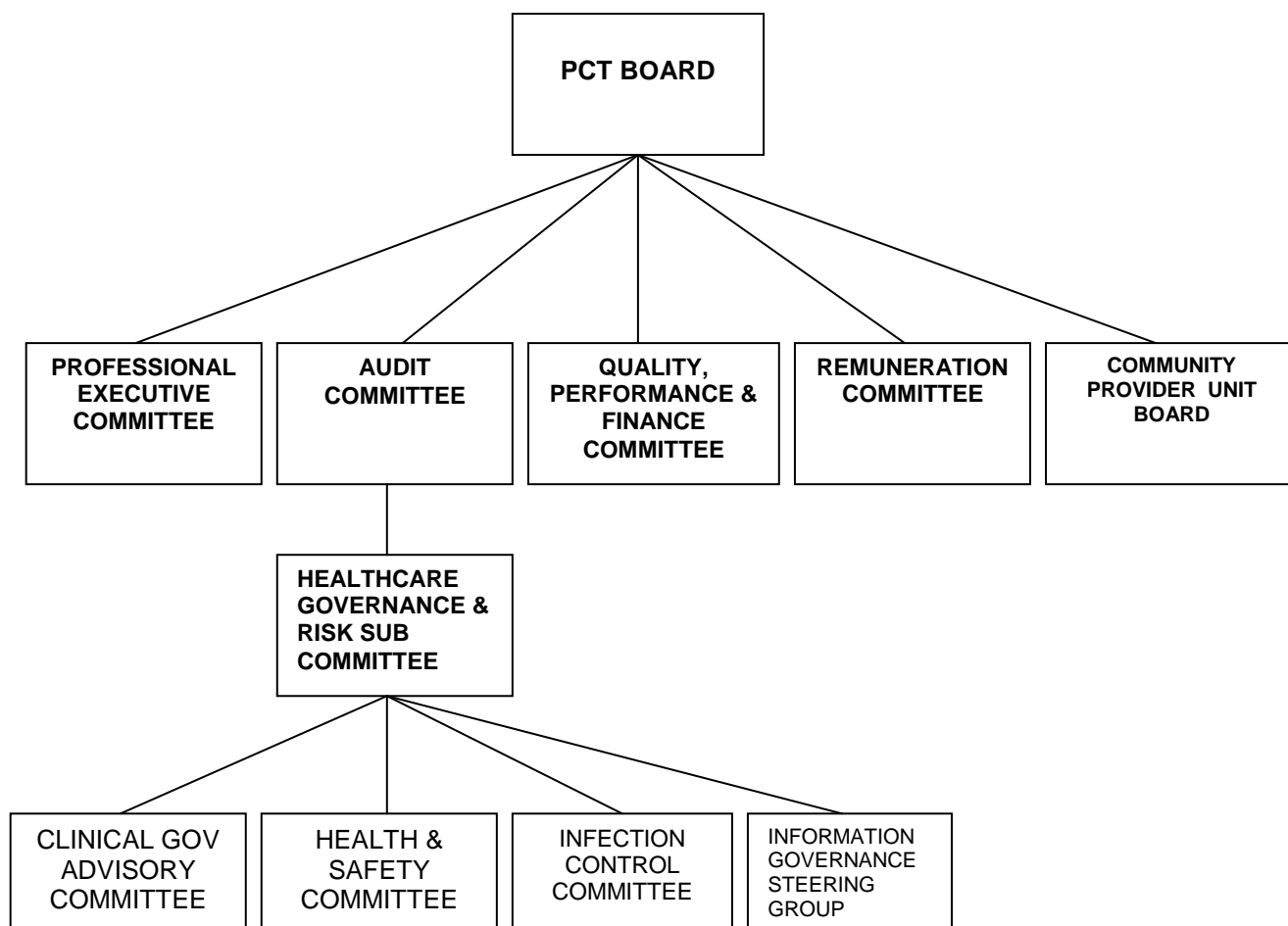
including external assessments undertaken by NHS London, and progress in the residential configuration project are received regularly by the PCT Board.

Separation of the Provider Arm

The PCT's Community Provider Unit achieved Autonomous Provider Unit status by the April 2009 deadline. This means that, while it still remains, for the time being, part of NHS Bromley, it operates 'at arms length' from the PCT, having its own Board (a committee of the PCT Board) and separate management team. Central support services such as HR continue to be provided by the PCT, but on an SLA basis.

In June 2009, following much public consideration, the PCT Board gave their agreement in principle to the development of its Community Provider Unit (CPU) as a Social Enterprise organisation which will be a completely separate organisation from the PCT. Throughout the year much work was undertaken to develop a full business case for the proposed new organisation, and this was considered by the PCT Board at the end of March 2010. The Board endorsed the proposal for the CPU to become a Social Enterprise organisation in the form of a company guaranteed by shareholders. It established a joint working committee to facilitate this externalisation process by April 2011 at the latest, and earlier if at all possible.

Board and Committee Structure 2009/10



Membership of the PCT Board

The Chairman and six Non Executive Directors of the PCT Board are appointed by the Appointments Commissioner on behalf of the Secretary of State for Health after local advertising of vacancies. The maximum term of appointment is four years, and appointments can be made for up to two consecutive terms.

The six Executive Directors comprised the Chief Executive, Finance Director, Chief Operating Officer, Joint Directors of Public Health, PEC GP and PEC nurse.

PCT Board membership during 2009/10 was as follows:-

Chairman

Elizabeth Butler

(Also Chair of the Remuneration Committee and the Quality, Performance and Finance Committee)

Non Executive Directors

Bee-Lean Chew	also member of the Audit Committee
Sarah Dowling	also Vice Chair of PCT Board and Chair of Community Provider Unit Board
David Fletcher	also Bromley PCT member on Healthcare for London JCPCT
Jim Gunner	also Chair of the Audit Committee
Harvey Guntrip	also member of the Audit Committee
Stephen Roberts	also member of the Community Provider Unit Board

The Chairman and all the Non Executive Directors also comprised the membership of the Remuneration and Terms of Service Committee which is responsible for setting the terms and conditions of employment of the PCT's executive directors. All Non Executive Directors also attend the Quality, Performance and Finance Committee.

Executive Directors

Simon Robbins	Chief Executive (to 31 March 2010)
Clive Uren	Chief Operating Officer and Acting Chief Executive from 1 April 2010
Marie Farrell	Director of Finance
Dr Nada Lemic	Joint Director of Public Health
Dr Angela Bhan	Joint Director of Public Health/PEC Chair
Kerry Bott	Nurse Representative, PEC
Dr Cath Jenson	GP Representative, PEC

The Professional Executive Committee

The role of the Professional Executive Committee (PEC) is to consider and develop proposals for policy development, strategy and priorities for consideration by the Board.

Dr Angela Bhan	Interim Chair/Joint Director of Public Health
Piyush Amin	Pharmacist Representative
Kerry Bott	Nurse Representative
Marie Farrell	Director of Finance
Dr Cath Jenson	GP Representative
Dr Nada Lemic	Joint Director of Public Health
Simon Robbins	Chief Executive
Dr Jacqueline Tavabie	GP Representative
Vacancy	Other Professions Representative



bromley council on ageing

BROMLEY COUNCIL ON AGEING

Bromley Council on Ageing is a **Voluntary Sector Forum** and a registered charity which was established in 1995.

It brings together over 60 voluntary organisations and community groups as well as interested individuals in order to represent their views and concerns regarding the planning and development of services for older people.

It provides representatives to participate on committees and in partnership meetings and to speak on behalf of older people.

It co-ordinates responses to consultations and discusses policy proposals and developments with senior managers from statutory bodies.

It supports the **Older Peoples Panel**, which has some 140 older people on its mailing list and plays an active part in identifying the needs of older people. It is regularly consulted by statutory bodies.

It also offers a **Training Programme** to older people to boost the confidence of individuals, and to develop their understanding of how policies are determined and services are structured. To date some 40 individuals have benefited from this.

Feedback to its members is carried out through a quarterly newsletter which indicates the areas of interest and concern to older people, as well as information on policies being considered or adopted by Bromley Council.

Feedback also comes from the opportunity to engage with Bromley Council Members and Officers at partnership meetings and consultation events.

July 2010

Gill Rose, Federation of Bromley Housing Associations

The Federation of Bromley Housing Associations is the quarterly forum for Housing Associations working in the Borough. Between us we manage all of the social housing in the Borough. Members meet with Bromley housing staff to discuss and agree initiatives, strategy, policy, performance and issues. I am the Vice Chair of the Federation and report back to the Federation on relevant issues from the Committee.

Lynne Powrie, Carers Bromley

Carers Bromley is a charity that supports carers, people who, unpaid, provide help and support to someone else. We have been in existence nearly 20 years and some of the services we provide includes information, advocacy, respite and, crucially, emotional support. 3,300 carers are known to us. We currently have 612 young carers on our database. Carers Bromley informs carers about what is happening locally via our website and our frequent newsletters –recent examples would be the inclusion of articles about Supporting Independence and the recent Transport Review. Caring is a cross-cutting issue and new initiatives which impact on carers should not add to the burden of an already over-worked, unpaid, frequently stressed and isolated Bromley resident.